

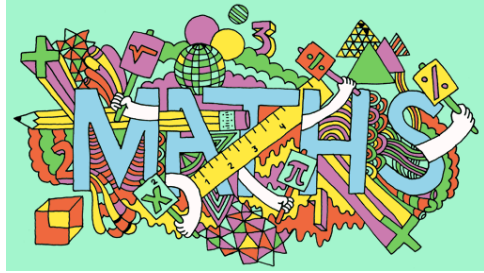
Maths: Measurement; Volume; Ratio, Geometry and Statistics

Calculate the area of parallelograms and triangles
Calculate, estimate and compare volumes of cubes and cuboids

Using ratio language
Introducing the ratio symbol
Calculating ratio
Using scale factors
Measure with a protractor

Angles on a straight line
Angles around a point
Calculate missing angles
Vertically opposite angles
Angles in a triangle

Circles
Read, draw and interpret line graphs
Read, draw and interpret pie charts
The mean



Weekly Reminders:

PE
Tuesday pm,
Thursday am

Spellings
Given out Monday
Tested Friday

Year 6 Knowledge Organiser Term 5

Science: Evolution and Inheritance

- recognise that living things have changed over time and that fossils provide information about living things that inhabited the Earth millions of years ago
- recognise that living things produce offspring of the same kind, but normally offspring vary and are not identical to their parents
- identify how animals and plants are adapted to suit their environment in different ways and that adaptation may lead to evolution

Art: Graffiti

- To create sketch books to record their observations and use them to review and revisit ideas
- To improve their mastery of art and design techniques, including drawing, painting and sculpture with a range of materials
- To find out about great artists, architects and designers in history (Banksy)
- Use line, shape and colour to create own tag

English

Key Texts:

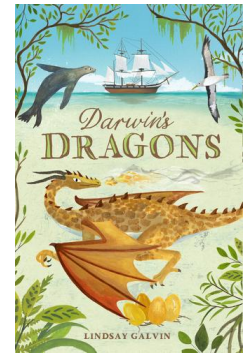
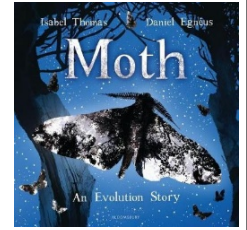
Moth by Isabel Thomas
Darwin's Dragons by Lindsay Galvin

Reading:

Understanding vocabulary (Black Hat)
Referring to and using evidence (White Hat)
Making inferences and explaining these ideas in more detail (Red Hat and Blue Hat)
Exploring the impact of specific vocabulary (Yellow Hat)

Writing:

Planning, editing and redrafting
Audience, purpose and features of different text types
Active and Passive voice
Formality
Parenthesis
Text Types - narrative, diary, letter, travel brochure, argument, report



History: Leisure and Entertainment through the 20th Century

- a study of an aspect or theme in British history that extends pupils' chronological knowledge beyond 1066
- changes in an aspect of social history, such as leisure and entertainment in the 20th Century
- holidays, football, movies, tv and ,music

RE: Beliefs in the Community

- To find out about the different beliefs of religious and non-religious communities in our local area.
- To find out about the impact faith and beliefs have had on the lives of inspirational figures.
- To consider the impact of different beliefs have on communities